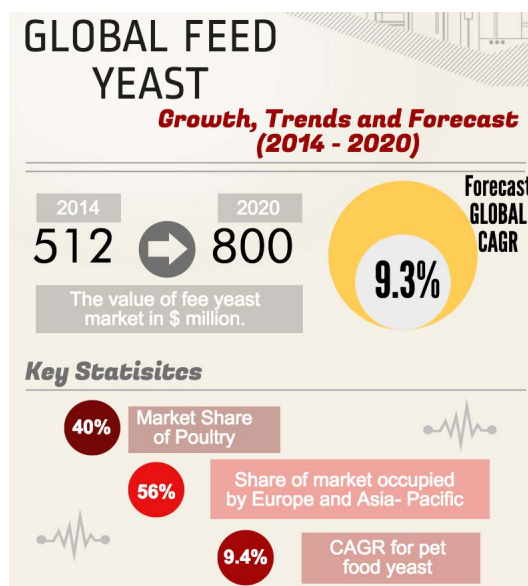


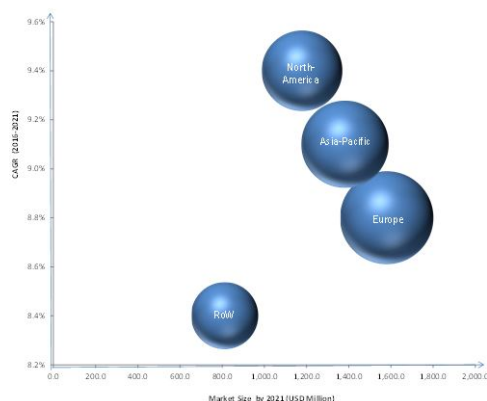
Yeast protein feed produced on the basis of yeast whey fermentation process. The yeast used is FDA approved, USDA choice and None GMO. It is slow dried to preserve vital elements in the feed or can be fed in the wet form.

The YPC is produced in the form of small, thin flakes, in “off white” color. The protein content depends on the quality of whey and varies from 26% to 34% of protein. The final product contains less than 5% moisture and is packed into 25kg totes (or as customer requested).

YPC will carry important amino acids for the animal nutrition and will be able to replace some of the more expensive elements in daily food rations (refer to composition analysis below).



Yeast & Specialty Yeast Market Size, by Region, 2021 (USD Million)



Source: Expert Interviews and MarketsandMarkets Analysis

Global Yeast Market, 2015 – 2021 (USD Billion)



Source: Zion Research Analysis 2016



1000 Corey Road
P.O. Box 886
Hutchinson, KS 67504-0886
620-665-5661
FAX: 620-665-0559
TOLL FREE: 877-464-0623
www.sdklabs.com

Sample # 50067
Sample: Dried Yeast Sample 1
Other ID:

Date Received: 12/13/2010
Date Reported: 12/16/2010
Total Fee: 49.00

ANALYSIS

	Dry Basis	As Received	
Moisture By Vacuum Oven		7.99	%
Dry Matter		92.01	%
Protein, Crude	32.39	29.80	%
Fiber, Crude	Less than 0.2		%
ADF-Acid Detergent Fiber	Less than 0.2		%
NDF-Neutral Detergent Fiber	0.34	0.31	%
NEL: Net Energy-Lactation	0.46	0.42	Mcal/lb
NEG: Net Energy-Gain	0.14	0.15	Mcal/lb
NEM: Net Energy-Maintenance	0.48	0.44	Mcal/lb
TDN: Total Digestible Nutrients	46.21	42.52	%
Metabolizable Energy - ME	0.76	0.70	Mcal/lb
Digestible Energy - DE	0.93	0.85	Mcal/lb
Fat (EE)	0.29	0.27	%
Ash	42.60	39	ppm
NFE-Nitrogen Free Extract	24.77	22.79	%
Calcium	3.80	3.50	%
Phosphorus	10.01	9.21	%
Potassium	6.40	5.89	%
Magnesium	0.61	0.56	%
Sodium	1.65	1.52	%
Sulfur	0.41	0.38	%
Aluminum	3840.00	3533.18	ppm
Cobalt	0.52	0.48	ppm
Copper	5.73	5.27	ppm
Iron	5410.00	4977.74	ppm
Manganese	177.00	162.86	ppm
Molybdenum	4.79	4.41	ppm
Zinc	323.00	297.19	ppm

Approved By:

Copies

ANALYTICAL RESULTS APPLY ONLY TO THE SUBMITTED SAMPLE AND MAY NOT REFLECT RESULTS OF SEEMINGLY IDENTICAL MATERIAL OR PRODUCTS.

SDK APPROVED CHEMISTS META-CERTIFIED LABORATORY ANISO-CERTIFIED LABORATORY



1000 Corey Road
P.O. Box 886
Hutchinson, KS 67504-0886
620-665-5661
FAX: 620-665-0559
TOLL FREE: 877-464-0623
www.sdklabs.com

Sample # 50068
Sample: Dried Yeast Sample 4
Other ID:

Date Received: 12/13/2010
Date Reported: 12/16/2010
Total Fee: 49.00

12/16/2010
10:00 AM
10/16/2010
10:00 AM

ANALYSIS

	Dry Basis	As Received	
Moisture By Vacuum Oven		5.43	%
Dry Matter		94.57	%
Protein, Crude	29.83	28.21	%
Fiber, Crude	Less than 0.2		
ADF-Acid Detergent Fiber	0.39	0.37	%
NDF-Neutral Detergent Fiber	0.40	0.38	%
NEL: Net Energy-Lactation	0.44	0.41	Mcal/lb
NEG: Net Energy-Gain	0.12	0.12	Mcal/lb
NEM: Net Energy-Maintenance	0.45	0.43	Mcal/lb
TDN: Total Digestible Nutrients	44.16	41.76	%
Metabolizable Energy - ME	0.73	0.69	Mcal/lb
Digestible Energy - DE	0.84	0.88	Mcal/lb
Fat (EE)	Less than 0.2		
Ash	42.77	40.45	%
NFE-Nitrogen Free Extract	27.40		%
Calcium	3.77	3.57	%
Phosphorus	9.82	9.29	%
Potassium	6.53	6.18	%
Magnesium	0.62	0.59	%
Sodium	1.62	1.53	%
Sulfur	0.41	0.39	%
Aluminum	3990.00	3773.34	ppm
Cobalt	0.54	0.51	ppm
Copper	5.76	5.45	ppm
Iron	5500.00	5201.35	ppm
Manganese	178.00	168.33	ppm
Molybdenum	4.59	4.34	ppm
Zinc	335.00	316.81	ppm

Approved By:

Copies

ANALYTICAL RESULTS APPLY ONLY TO THE SUBMITTED SAMPLE AND MAY NOT REFLECT RESULTS OF SEEMINGLY IDENTICAL MATERIAL OR PRODUCTS.

ISO 9001:2008 CERTIFIED CHEMISTS ISO 17025:2005 CERTIFIED LABORATORY ISO 9001:2008 CERTIFIED LABORATORY




1000 Corey Road
P.O. Box 886
Hutchinson, KS 67504-0886
620-665-5661
FAX: 620-665-0559
TOLL FREE: 877-464-0623
www.sdklabs.com

Sample # 50069
Sample: Dried Yeast Sample 6
Other ID:

Date Received: 12/13/2010
Date Reported: 12/16/2010
Total Fee: 49.00

ANALYSIS

	Dry Basis	As Received	
Moisture By Vacuum Oven		16.60	%
Dry Matter		83.40	%
Protein, Crude	34.36	28.66	%
Fiber, Crude	Less than 0.2		
ADF-Acid Detergent Fiber	Less than 0.2		
NDF-Neutral Detergent Fiber	0.48	0.40	%
NEL: Net Energy-Lactation	0.48	0.40	Mcal/lb
NEG: Net Energy-Gain	0.17	0.14	Mcal/lb
NEM: Net Energy-Maintenance	0.50	0.41	Mcal/lb
TDN: Total Digestible Nutrients	47.65	39.74	%
Metabolizable Energy - ME	0.78	0.65	Mcal/lb
Digestible Energy - DE	0.80	0.96	Mcal/lb
Fat (EE)	0.66	0.55	%
Ash	41.77	34.84	%
NFE-Nitrogen Free Extract	23.21	19.36	%
Calcium	3.71	3.09	%
Phosphorus	9.92	8.27	%
Potassium	6.44	5.37	%
Magnesium	0.98	0.82	%
Sodium	1.66	1.38	%
Sulfur	0.41	0.34	%
Aluminum	3880.00	3235.92	ppm
Cobalt	0.60	0.50	ppm
Copper	5.90	4.92	ppm
Iron	5310.00	4428.54	ppm
Manganese	175.00	145.95	ppm
Molybdenum	4.59	3.83	ppm
Zinc	318.00	265.21	ppm

Approved By: 
Copies

ANALYTICAL RESULTS APPLY ONLY TO THE SUBMITTED SAMPLE AND MAY NOT REFLECT RESULTS OF SEEMINGLY IDENTICAL MATERIAL OR PRODUCTS.



SGS North America
241 34th Ave
Brookings, SD 57006
analytical.brookings@sgs.com

Certificate of Analysis

Client:
CHS INC 563040
WEEKLY PACKAGES 5500 CENEX DRIVE
MAIL STATION 365

INVER GROVE HEIGHTS MN 55077
UNITED STATES

Sample Number: MW12-00631.001
Report Date: February 23, 2012
Received: January 27, 2012
Sample Type: Undefined Product
Sample Description:

Page 1 of 3

Sample Identification: Yeast Protein Feed

Analysis	Result	Units	Detection Limit	Uncertainty	Limits	Method
Aflatoxin B1	N.D.	PPB	0.1			LC/MS/MS
Aflatoxin B2	N.D.	PPB	0.03			LC/MS/MS
Aflatoxin G1	N.D.	PPB	0.1			LC/MS/MS
Aflatoxin G2	N.D.	PPB	0.03			LC/MS/MS
Aflatoxin Summation	0.0	PPB	0.0			LC/MS/MS
DON (Vomitoxin)	N.D.	PPM	0.24			LC/MS/MS
Fumonisin B1	N.D.	PPM	0.08			LC/MS/MS
Fumonisin B2	N.D.	PPM	0.08			LC/MS/MS
Ochratoxin	N.D.	PPB	8.0			LC/MS/MS
T2 toxin	N.D.	PPB	40			LC/MS/MS
Zearalenone	N.D.	PPB	8.0			LC/MS/MS
Hunter L Value	63.08		0.00			ColorFlex User's Guide, Ver. 2.5
Bulk Density	16.40	g/100cc	0.00			
Alanine	* 1.17	%	0.00			
Arginine	* 0.66	%	0.00			
Aspartic Acid	* 1.47	%	0.00			
Cystine	* 0.21	%	0.00			
Glutamic Acid	* 1.82	%	0.00			
Glycine	* 0.80	%	0.00			
Histidine	* 0.44	%	0.00			
Isoleucine	* 0.97	%	0.00			
Leucine	* 1.40	%	0.00			
Lysine	* 1.47	%	0.00			
Methionine	* 0.16	%	0.00			
Phenylalanine	* 0.96	%	0.00			
Proline	* 0.73	%	0.00			
Serine	* 0.79	%	0.00			

* Analytical results were determined by a third party laboratory. Information concerning the subcontracted laboratory is available upon request. Liability for the subcontracted results remain with the subcontracted laboratory.

WARNING: The sample(s) to which the findings recorded herein (the "Findings") relate was(were) drawn and/or provided by the Client or by a third party acting at the Client's direction. The Findings constitute no warranty of the sample's representativeness of any goods and strictly relate to the sample(s). The Company accepts no liability with regard to the origin or source from which the sample(s) is/are said to be extracted.

The sample condition upon arrival was acceptable for testing unless otherwise noted.

This document is issued by the Company under its General Conditions of Service accessible at http://www.sgs.com/terms_and_conditions. Attention is drawn to the limitation of liability, indemnification and jurisdiction issues defined therein.

Any holder of this document is advised that information contained hereon reflects the Company's findings at the time of its intervention only and within the limits of Client's instructions, if any. The Company's sole responsibility is to its Client and this document does not exonerate parties to a transaction from exercising all their rights and obligations under the transaction documents. Any unauthorized alteration, forgery or falsification of the content or appearance of this document is unlawful and offenders may be prosecuted to the fullest extent of the law.

Threonine	*	0.81	%	0.00		
Tryptophan	*	0.25	%	0.00		
Tyrosine	*	0.86	%	0.00		
Valine	*	0.88	%	0.00		
Virginiamycin		N.D.	mg/kg	0.1		FDA LIB 4438 (LC/MS/MS)
Penicillin G		N.D.	mg/kg	1.0		FDA LIB 4438 (LC/MS/MS)
Phosphorous content as received		3.20	%(m/m)	0.01		AOAC 968.08
Potassium content as received		7.09	%(m/m)	0.00		AOAC 968.08
Calcium content as received		2.07	%(m/m)	0.01		AOAC 968.08
Magnesium content as received		0.54	%(m/m)	0.00		AOAC 968.08
Zinc content as received		35.25	PPM	1.48		AOAC 968.08
Manganese content as received		13.98	PPM	0.09		AOAC 968.08
Copper content as received		8.32	PPM	0.08		AOAC 968.08
Iron content as received		420.89	PPM	0.24		AOAC 968.08
Sodium content as received		2.46	%(m/m)	0.00		AOAC 968.08
Sulfur content as received		0.35	%(m/m)	0.02		AOAC 968.08

Analysis	As Received	On Dry Matter	Units	Method
Moisture content	5.78	--		NFTA 2.2.2.5
Drymatter content	94.22	--		NFTA 2.2.2.5
Acid detergent fiber	15.67	16.63		Calculation
Crude fiber content	7.05	7.48		AOAC 962.09
Crude ash content	30.30	32.16		AOAC 942.05
Total digestible nutrients	76.22	80.89		Calculation
Net Energy Lactation	0.80	0.85		Calculation
Net Energy Maintenance	0.88	0.93		Calculation
Net Energy Gain	0.57	0.61		Calculation
Digestible Energy	1.66	1.76		Calculation
Metabolizable Energy	0.90	--		Calculation
NDF	0.08	--	%	ANKOM Technology Method 6
Crude fat content	0.69	0.73	%(m/m)	AOAC 2003.06
Crude protein content	32.50	34.50	%(m/m)	AOAC 972.43 (Nx6.25)

Abbreviations:

N.D.: Not Detected

Data Start/End Analysis : 01/27/2012 - 02/13/2012

WARNING: The sample(s) to which the findings recorded herein (the "Findings") relate was(were) drawn and/or provided by the Client or by a third party acting at the Client's direction. The Findings constitute no warranty of the sample's representativeness of any goods and strictly relate the the sample(s). The Company accepts nor liability with regard to the origin or source from which the sample(s) is/are said to be extracted.

The sample condition upon arrival was acceptable for testing unless otherwise noted.

This document is issued by the Company under its General Conditions of Service accessible at http://www.sgs.com/terms_and_conditions. Attention is drawn to the limitation of liability, indemnification and jurisdiction issues defined therein.

Any holder of this document is advised that information contained hereon reflects the Company's findings at the time of its intervention only and within the limits of Client's instructions, if any. The Company's sole responsibility is to its Client and this document does not exonerate parties to a transaction from exercising all their rights and obligations under the transaction documents. Any unauthorized alteration, forgery or falsification of the content or appearance of this document is unlawful and offenders may be prosecuted to the fullest extent of the law.